

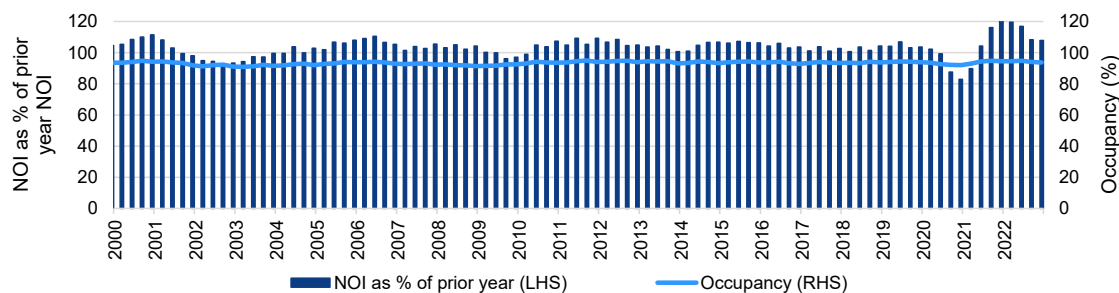
Private Real Estate Lending: There's No Place Like Home

As veteran real estate debt providers, we are more enthusiastic than ever about the commercial lending opportunities available today. Traditional lenders have been sidelined due to elevated market volatility and lack of real estate price discovery, creating a gap in the marketplace to be filled by alternative lenders, including private mezzanine providers like CenterSquare. While this opportunity set is significant today, it is important to note not all asset classes are created equal. Certain property types are far better positioned to lend against, especially as we head into a recession. To wit, we believe rental residential to be a shining sector for private real estate debt due to the structural undersupply of housing and strong demand tailwinds for affordable options.

Fundamental Resiliency

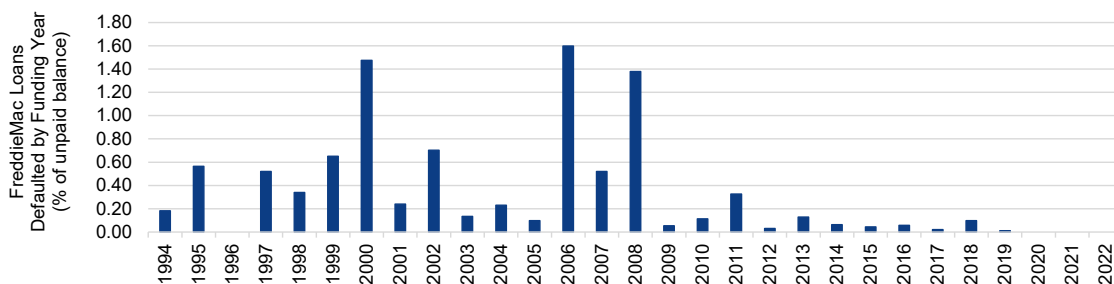
The needs-based demand for multifamily has resulted in the asset class experiencing resilient occupancy levels throughout historical downturns. Going as far back as the late 1980s (Figure 1), occupancy levels of institutional multifamily investments have remained above 90.6%. This data suggests that even through economic downturns, while rent levels of multifamily assets may flatten or even decrease, these assets are unlikely to become vacant, unlike other types of commercial real estate property types. As a result of the sticky tenant base, NOI levels have remained robust, and recovered quickly following economic recessions. As a function of the steady cash flows, delinquency rates for these assets have remained muted. For example, Freddie Mac's Multifamily Loan Performance Database shows that of the 52,500 loans purchased by Freddie Mac (total unpaid balance > \$700 BN), only 0.14% have defaulted (Figure 2).

Figure 1: Historical Multifamily Occupancy and NOI Levels Steady



Source: NCREIF as of December 31, 2022.

Figure 2: Historical Multifamily Loan Default Rates Low



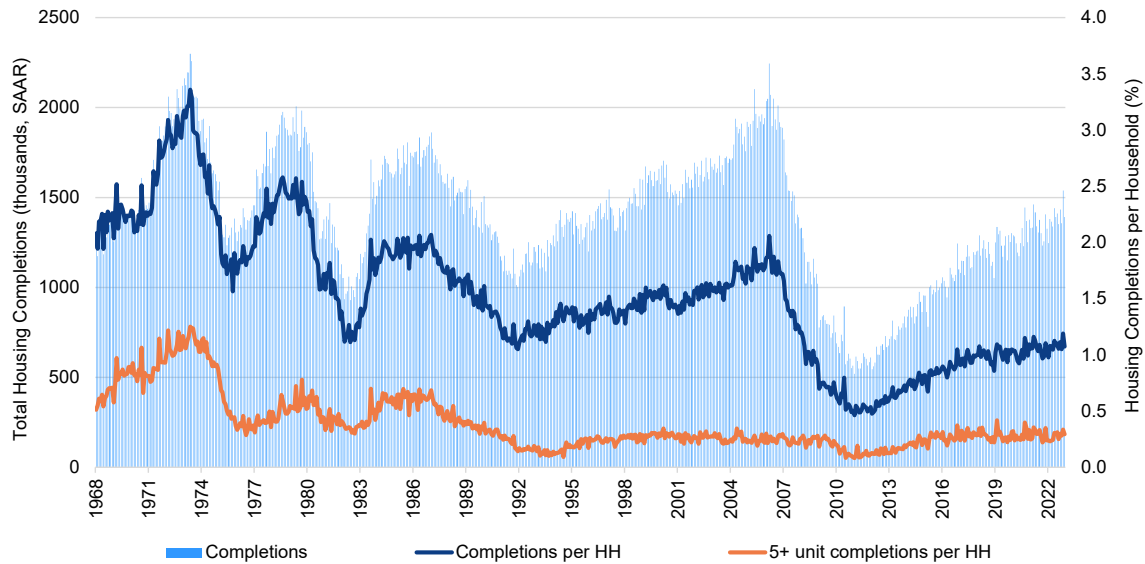
Note: The Multifamily Loan Performance Database (MLPD) provides historical information on a subset of the Freddie Mac multifamily loan portfolio. It excludes loans that are credit revolvers, sold book (pre-1994) loans, and negotiated transactions/structured deals and K001 and K002.

Source: Freddie Mac multifamily loan performance database as of December 31, 2022.

Structural Tailwinds

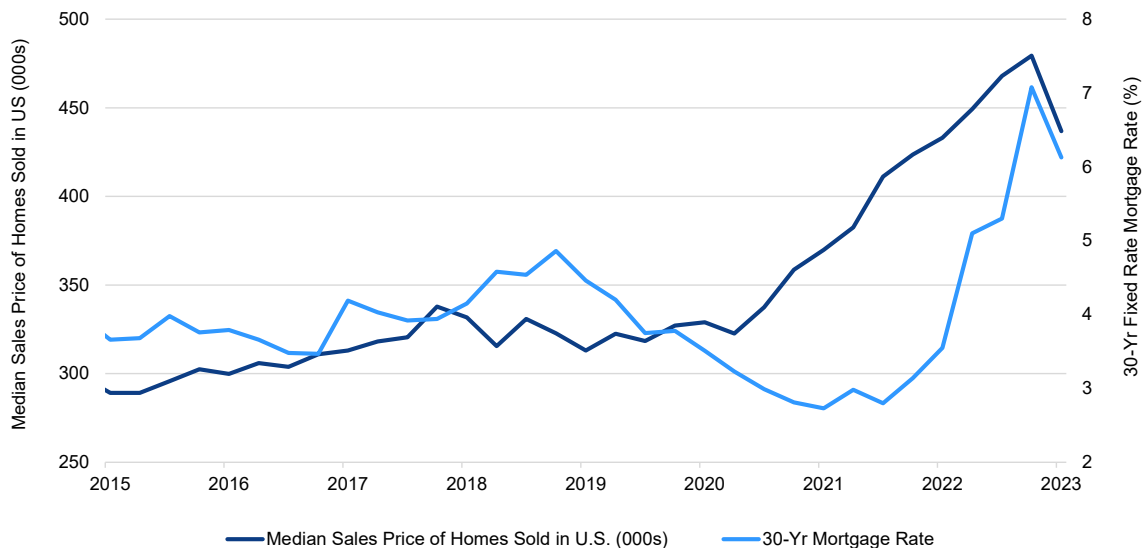
In addition to the resiliency of the asset class, current supply and demand dynamics are creating the foundation for future strength for the rental residential sector. Housing completions have not kept pace with household formations over the last economic cycle, creating a structural undersupply of housing (Figure 3), resulting in rising home prices. This dynamic coupled with higher mortgage rates has exacerbated the unaffordability of home ownership for consumers (Figure 4), keeping them renters for longer. These factors should continue to provide structural demand, and therefore, pricing power for rental residential landlords, especially for product at lower price points that provide affordable housing solutions.

Figure 3: Multifamily Demand Benefiting Today From Structural Undersupply of Housing



Source: U.S. Census Bureau as of December 31, 2022.

Figure 4: High Mortgage Rates and Elevated Home Prices Make Home Ownership More Unaffordable

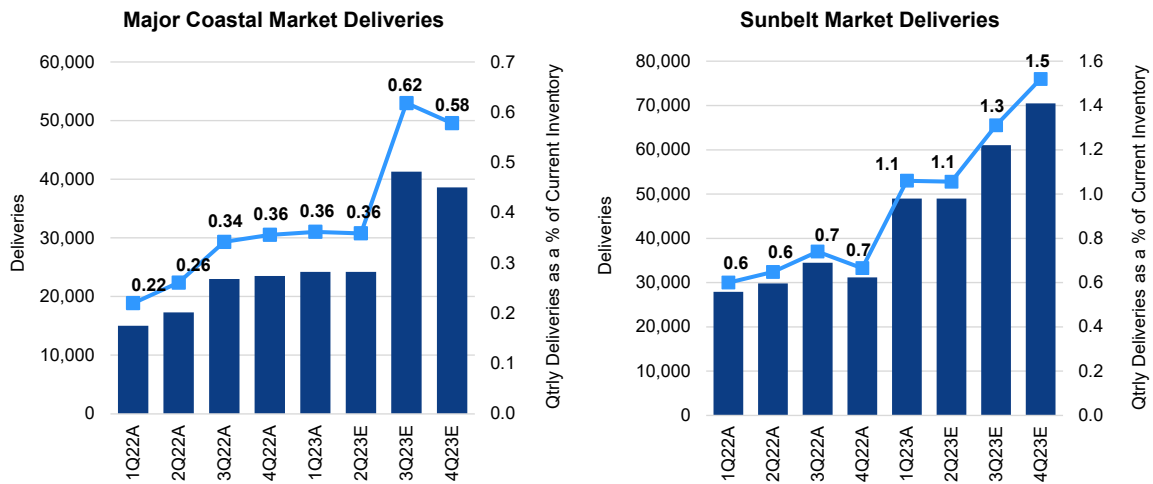


Source: Federal Reserve of St. Louis as of December 31, 2022.

Markets Matter

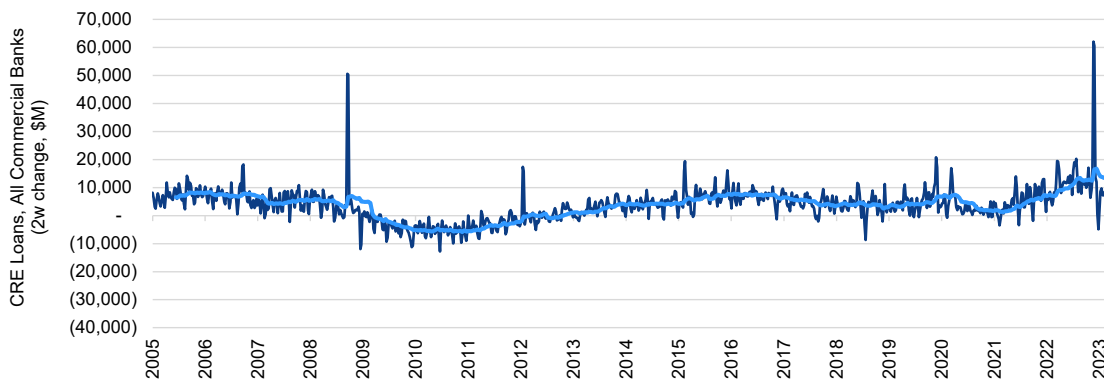
While there is an elevated multifamily development pipeline poised to increase supply, the new product is largely concentrated in sunbelt markets (Figure 5) and at higher price points, as construction costs remain elevated and higher rents are required to justify new development. While the current development pipeline for multifamily nationally remains elevated, real estate lending, especially for construction, has come to a standstill (Figure 6) and should result in a moderating supply pipeline. Meanwhile, moderate-income product, especially in the coastal geographies, is facing limited pressure as new supply remains cost-prohibitive. Lenders like CenterSquare who have chosen to focus upon lending on value-add business plans for Class B multifamily in the coastal markets are less concerned with an oversupply anytime soon.

Figure 5: Coastal and Sunbelt Supply Trends Differ



Source: RealPage, Evercore ISI Research as of April 13, 2023. The above charts contain forward-looking information that can not be guaranteed.

Figure 6: Commercial Bank Lending for CRE Has Come to a Halt



Source: Federal Reserve of St. Louis as of December 31, 2022.

Amidst a cacophony of macroeconomic and market drivers, private real estate debt is having its moment. Yet, this favorable risk/reward scenario won't manifest for every lender. Operating in sectors benefiting from the current supply and demand imbalance while remaining insulated from the pending recession is the line to walk. From our viewpoint, the multifamily rental residential sector is optimally positioned to capture the greatest upside over the next decade as secular tailwinds and long-term foundational fundamentals form the optimal backdrop. For CenterSquare Real Estate Debt, there really is no place like home.

Disclosures

Any statement of opinion constitutes only the current opinion of CenterSquare and its employees, which are subject to change and which CenterSquare does not undertake to update.

Material in this publication is for general information only and is not intended to provide specific investment advice or recommendations for any purchase or sale of any specific security or commodity. Due to, among other things, the volatile nature of the markets and the investment areas discussed herein, investments may only be suitable for certain investors. Parties should independently investigate any investment area or manager, and should consult with qualified investment, legal, and tax professionals before making any investment. Some information contained herein has been obtained from third party sources and has not been independently verified by CenterSquare Investment Management LLC (“CenterSquare”). CenterSquare makes no representations as to the accuracy or the completeness of any of the information herein. Accordingly, this material is not to be reproduced in whole or in part or used for any other purpose. Investment products (other than deposit products) referenced in this material are not insured by the FDIC (or any other state or federal agency), are not deposits of or guaranteed by CenterSquare, and are subject to investment risk, including the loss of principal amount invested.

For marketing purposes only. Any statements and opinions expressed are as at the date of publication, are subject to change as economic and market conditions dictate, and do not necessarily represent the views of CenterSquare or any of its affiliates. The information has been provided as a general market commentary only and does not constitute legal, tax, accounting, other professional counsel or investment advice, is not predictive of future performance, and should not be construed as an offer to sell or a solicitation to buy any security or make an offer where otherwise unlawful. The information has been provided without taking into account the investment objective, financial situation or needs of any particular person.

Any indication of past performance is not a guide to future performance. The value of investments can fall as well as rise, so investors may get back less than originally invested. Because the investment strategies concentrate their assets in the real estate industry, an investment is closely linked to the performance of the real estate markets. Investing in the equity securities of real estate companies entails certain risks and uncertainties. These companies experience the risks of investing in real estate directly. Real estate is

a cyclical business, highly sensitive to general and local economic developments and characterized by intense competition and periodic overbuilding. Real estate income and values may also be greatly affected by demographic trends, such as population shifts or changing tastes and values. Companies in the real estate industry may be adversely affected by environmental conditions. Government actions, such as tax increases, zoning law changes or environmental regulations, may also have a major impact on real estate. Changing interest rates and credit quality requirements will also affect the cash flow of real estate companies and their ability to meet capital needs.

This communication is not an offer of securities for sale in the United States, Australia, Canada, Japan or any other jurisdiction where to do so would be unlawful. CenterSquare has not registered, and does not intend to register, any portion of the securities referred to herein in any of these jurisdictions and does not intend to conduct a public offering of securities in any of these jurisdictions. This communication is being distributed to, and is directed only at, persons in the United Kingdom in circumstances where section 21(1) of the Financial Services and Markets Act 2000 does not apply (such persons being referred to as “relevant persons”). Any person who is not a relevant person should not act or rely on this communication or any of its contents. Any investment activity (including, but not limited to, any invitation, offer or agreement to subscribe, purchase or otherwise acquire securities) to which this communication relates will only be available to, and will only be engaged with, persons who fall within the target market. This communication is an advertisement and is not a prospectus for the purposes of Directive 2003/71/EC, as amended (such directive, the “Prospectus Directive”) and/or Part IV of the Financial Services and Markets Act 2000.

Canada Specific Disclosures

This document has been prepared solely for information purposes and is not an offering memorandum nor any other kind of an offer to buy or sell or a solicitation of an offer to buy or sell any security, instrument or investment product or to participate in any particular trading strategy. It is not intended and should not be taken as any form of advertising, recommendation, investment advice or invitation to trade. This information is confidential and for the use of the intended recipients only. The distribution of this document in Canada is restricted to recipients who are qualified “permitted clients” for purposes of NI31-103. This document may not be reproduced, redistributed or copied in whole or in part for any purpose without prior written consent.

About CenterSquare

Founded in 1987, CenterSquare Investment Management is an independent, employee-owned real asset manager focused on listed real estate, private real estate equity and private real estate debt investments. As a trusted fiduciary, our success is firmly rooted in aligning our interests with those of our clients, partners and employees. CenterSquare is headquartered in suburban Philadelphia, with offices in New York, Los Angeles, London and Singapore. With approximately \$13 billion in assets under management (April 30, 2023), our firm and subsidiaries are proud to manage investments on behalf of some of the world's most well-known institutional and private investors.

For more information, please contact:

CenterSquare Investment Management
630 West Germantown Pike
Suite 300
Plymouth Meeting, PA 19462
contactus@centersquare.com
www.centersquare.com

Follow us on social media:

